



**TragenFlex**

**INSTRUCTION MANUAL FOR MODEL SDT**

# **SCRAPPING DISH TABLE**

# TABLE OF CONTENTS

## INSTRUCTION MANUAL FOR MODEL - SDT SCRAPPING DISH TABLE

<b>1.</b>	<b>OPERATING INSTRUCTIONS</b>	<b>3</b>
1.1.	HIP SWITCH	3
1.2.	LIMIT SWITCH	4
1.3.	AUTO PLATE RINSE STATION	4
1.4.	HOSE CLEANUP STATION	5
<b>2.</b>	<b>TROUBLESHOOTING</b>	<b>6</b>
2.1.	HIP SWITCH	6
2.2.	LIMIT SWITCH	6
2.3.	HOSE CLEAN UP STATION	6
2.4.	PLATE RINSE STATION	7
<b>3.</b>	<b>MODEL SDT- SCRAPPING TABLE PARTS</b>	<b>8</b>
<b>4.</b>	<b>WARRANTY FOR SCRAPPING TABLE</b>	<b>10</b>
4.1.	WARRANTY PERIOD	10
4.2.	WARRANTY COVERAGE	10
4.3.	GENERAL	10

## **1. OPERATING INSTRUCTIONS**

### **1.1. HIP SWITCH**

Hip and limit switches serve different purposes. The Hip Switch is used to run the slat belt accumulation conveyor. Pushing the plate, which is located under the table, actuates it. The conveyor runs as long as the plate is held pressed and stops when the plate is released. This function is intended to help the operator to clear the work area section by section and achieve maximum accumulation.

To override the Hip Switch you must press either the green START button located at the main control panel or auxiliary remote panel. When the conveyor is running the hip switch can take over start and stop functions as explained above. The Hip Switch Plate should be cleaned daily and the switch itself should be inspected for any damage.



*Hip Switch Operation*

Figure 1.0

## 1.2. LIMIT SWITCH

Limit switch is most commonly known as an accumulation switch. It is actuated automatically by product accumulation. The Conveyor restarts once the accumulation is cleared. Each system is custom built to the specific needs of the customer. Hence some system may incorporate the above switches and some may not.

## 1.3. AUTO PLATE RINSE STATION



*Plate Rinse Station*

Figure 2.0

The Plate Rinse station has been designed to provide an efficient working environment to rinse the soiled dishes.

General instructions to use the Plate Rinse station:

1. Turn on the water supply located on the front of the scrapping table.
2. All the controls for the 'Plate Rinse Station' are located on the Main Control Panel. Turn the selector switch to 'AUTO'. Open the shut off valve located on the showerhead. The showerheads will activate whenever an object is placed under the sensor.
3. At the end of the shift turn off the water supply and then set the selector switch to 'OFF' position.
4. The selector switch can be turned to the 'ON' position when the operator wishes to override the sensor. In the 'ON' position, the showerhead will run regardless of the sensor's response. It is recommend using this feature when there is a large volume of dishes to handle or when the photo sensors are inactive.



5. Daily clean up requires wiping down the photo electric eye using a non-abrasive cloth with warm soap water. This will ensure correct functioning of the sensor.

#### 1.4. HOSE CLEANUP STATION

The Hose Cleanup Station is designed to aid the operator during a routine cleaning. Each hose clean up station is equipped with a 30' long heavy-duty wash down hose and a heavy-duty spray head mounted on a stainless steel swivel bracket. After cleaning, the hose can be spooled back on the swivel bracket.



*Hose Cleanup Station*

Figure 3.0

General instructions to use the hose clean up station:

1. Before using the hose from the clean up station, make sure that the water supply in the plumbing cabinet is available and there are no twists in the hose.
2. While spooling up the hose, please ensure that there are no twists left in the hose. The twists will damage the hose if they remain for a period of time.

## 2. TROUBLESHOOTING

### 2.1. HIP SWITCH

PROBLEM	PROBABLE CAUSE	SOLUTION
1. When hip switch is depressed, the conveyor does not run	The main control switch is in the 'OFF' position  Fuse is blown in the main control panel	Make sure that the main control switch is in the 'ON' position  Check the fuse and the relay located in the main control panel. Try running the unit using the controls located on the main control panel.

### 2.2. LIMIT SWITCH

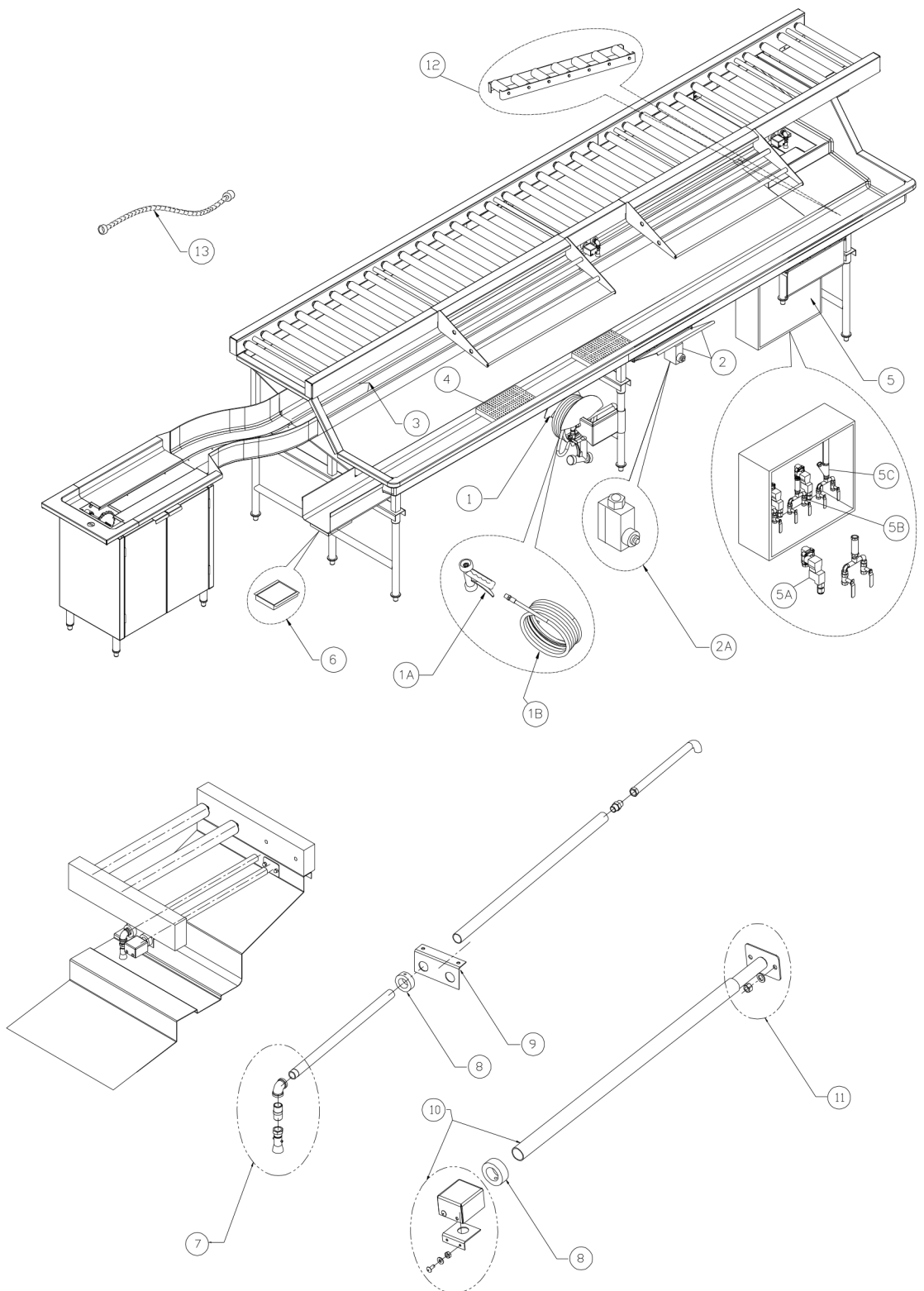
PROBLEM	PROBABLE CAUSE	SOLUTION
2. When limit switch is depressed, the conveyor does not stop.	Stainless Steel flap is not actuating the switch.  The limit switch may be stuck in the off position or damaged. This is usually caused by the boot being pinched  Fuse is blown in the main control panel	Test the switch by lifting up the Stainless Steel flap and activating it manually, if it works then the flap actuating the switch shall be adjusted by setting the bolt take-up.  Inspect the limit switch for any physical damage to the rubber boot. Replace the damaged Switch.  Check the fuse and the relay located in the main control panel. Replace the fuse.

### 2.3. HOSE CLEAN UP STATION

PROBLEM	PROBABLE CAUSE	SOLUTION
Not enough water pressure	The supply is not exclusive. This may cause drop in the pressure due to the branching off to the other lines.  Shut-off valves are not fully open.	Check to make sure that the water supply is exclusive.  Check to make sure all the shut off valves are fully open.

## 2.4. PLATE RINSE STATION

PROBLEM	PROBABLE CAUSE	SOLUTION
Water doesn't spray when a dish is put under the sensor	Water supply is not turned on.	Check to make sure that the water supply is turned on.
	'AUTO PLATE RINSE' is set to "OFF" position.	Make sure that the 'AUTO PLATE RINSE' is set to AUTO at the main control panel.
	Head of the sensor is not clean	Clean the sensor head with a non-abrasive sponge.
	Sensor is not seeing the object.	The angle of the sensor head may require an adjustment. Loosening the set collar that holds the sensor and then changing its position can accomplish this.
	Stack of dishes or highly reflective object is too close to the sensor	Check and adjust the sensor position
	Fuses are blown.	Check and replace the fuse.
	Relays are faulty.	Check the relays located in the main control panel and replace.
	Sensor is not working.	Switch the control to ' ON' position, This will allow the plate rinse to override the sensor and operate manually by the shut off valve located above the spray head. Contact TragenFlex for replacement of the sensor.



## SDT - SCRAPPING DISH TABLE PARTS LIST

PART NUMBER	DESCRIPTION
SDT 1	Hose Reel Assembly
SDT 1A	Spray Gun
SDT 1B	Hose 30 feet long
SDT 2	Hip switch Assembly including Actuator Plate
SDT 2A	Hip Switch
SDT 3	1" Square snap-on Plastic Wear Guide
SDT 4	Perforated Plate Ledges
SDT 5	Plumbing Box
SDT 5A	Solenoid Valve 120V
SDT 5B	Plumbing Valve Assembly 1 (With Solenoid Control Valve)
SDT 5C	Plumbing Valve Assembly 2 (With Manual Control Valve)
SDT 5D	Solenoid Valve 24 VCD
SDT 6	Small Magnet -mounted under trough with cover
SDT 7	Shower Head Assembly
SDT 8	Set Collar
SDT 9	Suspension Bracket
SDT 10	Photo Sensor Enclosure
SDT 10A	Photo Sensor
SDT 11	Mounting Lug
SDT 12	Stub Roller
SDT 13	S/S Flex Braded Hose
SDT 14	Vacuum Breaker (Not Shown)

**4.1. WARRANTY PERIOD**

TragenFlex warrants its products to the original purchaser against the defects in material and workmanship, under normal use and service for a period of one year after the date of installation.

**4.2. WARRANTY COVERAGE**

The obligation of TragenFlex under this warranty is to repair or replace any defects in the equipment. All the services covered under the warranty will be provided by TragenFlex during the regular working hours. All claims against this warranty must be made in writing. Equipment must be serviced either by technicians of TragenFlex or agents authorized by TragenFlex. All warranty parts will be shipped to the client via ground transportation.

Normal wear on parts and clogged drains are not covered under this warranty. TragenFlex is not liable for any faulty installation or damage caused to the showerheads and photo sensors by unauthorized alteration, misuse or abuse of the equipment.

**4.3. GENERAL**

Liability or obligation in connection with the products of TragenFlex other than those covered in this warranty by any other person's assumption is not authorized by TragenFlex. This warranty is limited to the United States and Canada.



**TragenFlex**